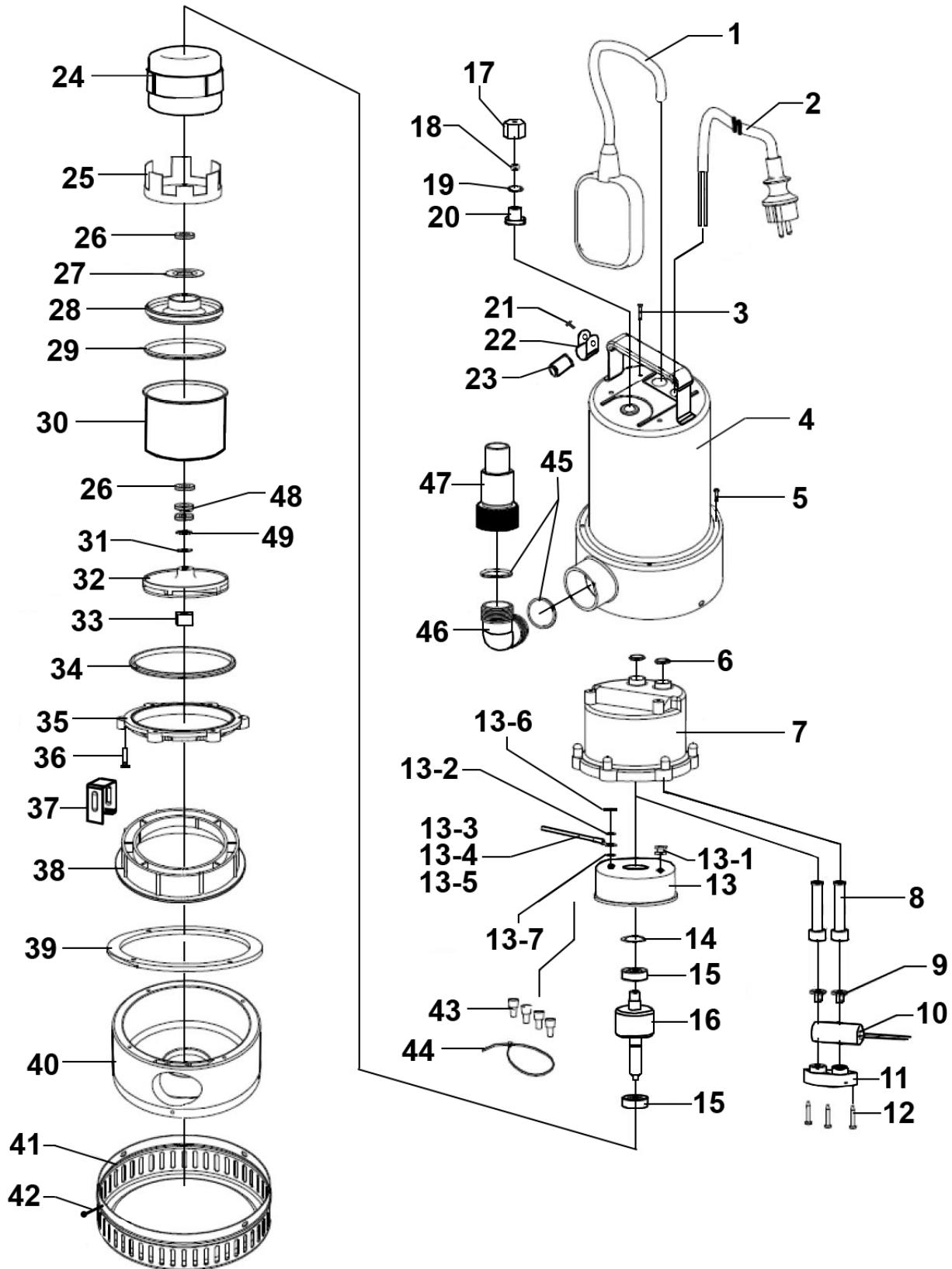




Parts Information:
Submersible Stainless Water Pump
Automatic 250L/min 230V
Model No: WPS250A



NOTE: It is our policy to continually improve products and as such we reserve the right to alter data, specifications and component parts without prior notice. There may be alternative versions of this product, please contact us should you require this information.

IMPORTANT: No liability is accepted for incorrect use of product. Spare parts must be fitted by a competent person

WARRANTY: Guarantee is 12 months from purchase date, proof of which will be required for any claim.

Sealey Group, Kempson Way, Suffolk Business Park, Bury St Edmunds, Suffolk. IP32 7AR



01284 757500



sales@sealey.co.uk



www.sealey.co.uk



Parts Information:
Submersible Stainless Water Pump
Automatic 250L/min 230V
Model No: WPS250A

Item	Part No.	Description
1	WP01401001	Float Switch 10A 250V (IP68) Blue
2	WP08701001	Power Cable
3	S0685.V2-26	Rd Head S/T Screw M4 X 13
4	WP03005003	Main Body Kit
5	WP845H	Self Tapping Screw ST4.2x18
6	AVR2500A.P22	O-Ring, (Ex: 19.18 In: 13.94 Cs: 2.62)
7	WP00301010	Rear Pump Cover
8	WP05201036	Cable Sheath
9	WP05602008	Cable Buckle
10	WP08401001C	Capacitor 8uf
11	WP05501001	Cable Grip
12	WP07802018	Self-Tapping Screw
13	WP02602004	Aluminum Rear Cover
13-1	WP05202003	Wire Sheath
13-2	WP934A	Washer
13-3	WP08601010	Wire (Green/Yellow)
13-4	WP04102006	Plate
13-5	WP08301001	Heat Shrink Tube
13-6	WP86224	Washer
13-7	WP818	Screw M4x8
14	WP03801001	Wave Washer
15	B/6201ZZ	Bearing 6201zz
16	WP02301007	Rotor
17	WP01701002	Nut
18	WP3086	Steel Ball
19	WP05104006	Sealing Ring
20	WP01702002	Vent Body
21	WP818A	Screw M5x6

Item	Part No.	Description
22	WP01203001	Wire Clip
23	WP05201043	Cable Sheath
24	WP02202007	Stator
25	WP02005011	Bushing Ring
26	WP03802023	Washer
27	WP05102002	Sealing Ring 12*24*4.5*17
28	WP04204001	Aluminum Bushing
29	WP05101052	O-Ring
30	WP02501054	Front Cover
31	WP03802005	Adjusting Gasket
32	WP00904005	Impeller
33	SN8.S	Steel Nut M8 Zinc
34	WP05101010	O-Ring, (Ex: 102.10 In: 91.44 Cs: 5.33)
35	WP00801007	Pressing Ring
36	WP845I	Self Tapping Screw ST4.2x32
37	WP04102015	Connector
38	WP05301002	Locating Ring
39	WP03204009	Large Rubber Gasket
40	WP00501007	Pump Base (Inner)
41	WP00603003	Pump Base
42	WP845J	Self Tapping Screw ST3.9x13
43	WP04101001	Nylon Safety Press Line Cap
44	WP08501001	Cable Tie
45	WP05101006	O-Ring, (Ex: 43.06 In: 37.28 Cs: 3.39)
46	WP02803001	Elbow
47	WP02703001	Output Connector
48	WP06101007	Mechanical Seal
49	RE231.18	External Circlip 10.8mm ID

NOTE: It is our policy to continually improve products and as such we reserve the right to alter data, specifications and component parts without prior notice. There may be alternative versions of this product, please contact us should you require this information.

IMPORTANT: No liability is accepted for incorrect use of product. Spare parts must be fitted by a competent person

WARRANTY: Guarantee is 12 months from purchase date, proof of which will be required for any claim.

Sealey Group, Kempson Way, Suffolk Business Park, Bury St Edmunds, Suffolk. IP32 7AR



01284 757500



sales@sealey.co.uk



www.sealey.co.uk